

DEVELOPMENT SITES - AVAILABLE

MIXED-USE, COMMERCIAL/MEDICAL OFFICE
 NWC OF E. 146TH ST. & HAZEL DELL PKWY., NOBLESVILLE, IN

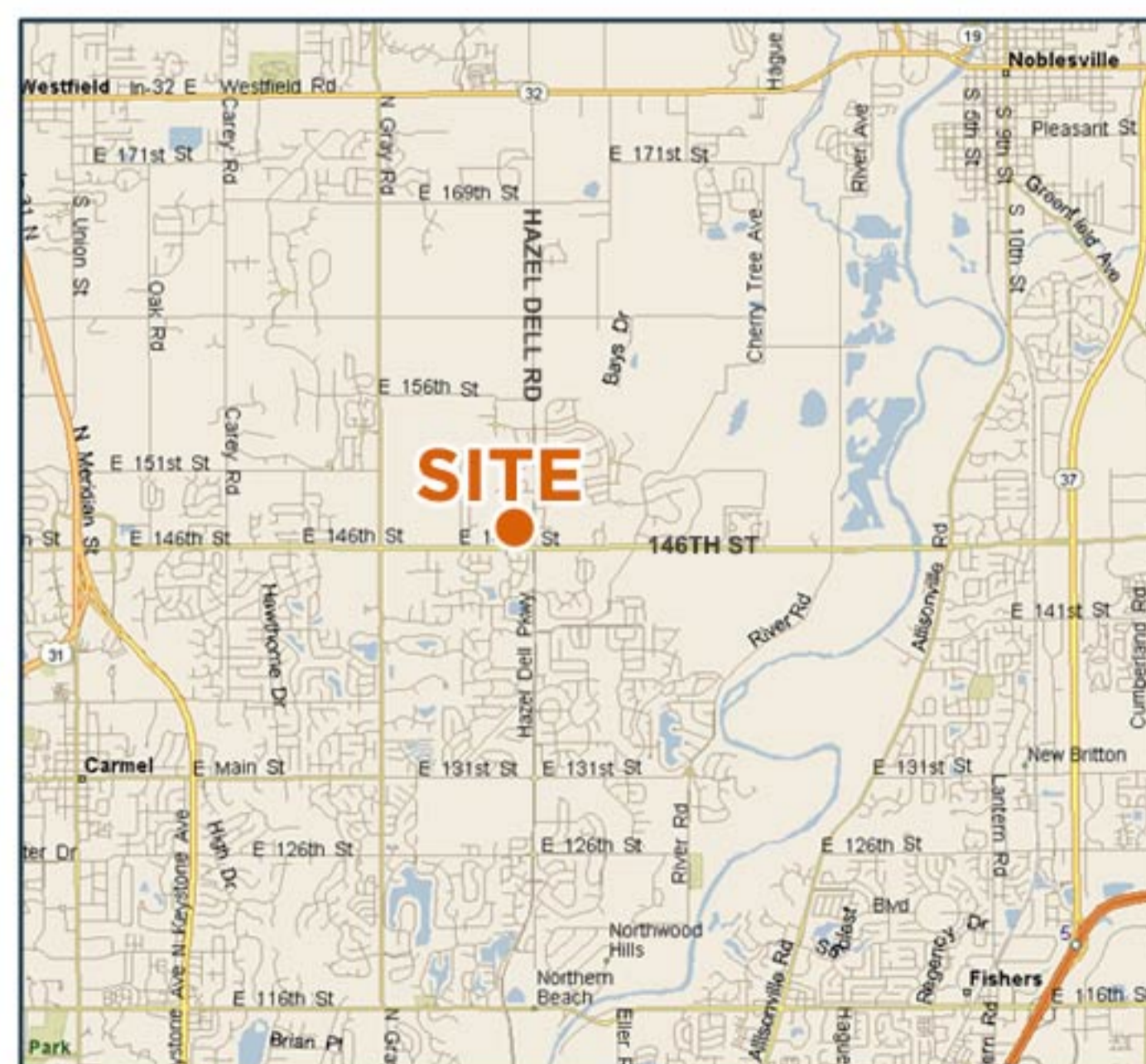


PROPERTY DESCRIPTION

+/- 37.07 acre mixed-use site available for commercial/medical development. Zoned Planned Business. New IU Health medical center on the hard corner, opening Fall 2017. Located in a high growth, high income area at the intersection of E 146th St & Hazel Dell Pkwy, two major commuter thoroughfares.

DEMOGRAPHICS

	<u>1 mile</u>	<u>3 mile</u>	<u>5 mile</u>
Population	5,469	47,239	157,305
Households	1,882	16,957	61,684
Avg Household Income	\$160,914	\$148,156	\$111,402
Daytime Population	756	8,228	74,073



FOR MORE INFORMATION CONTACT:

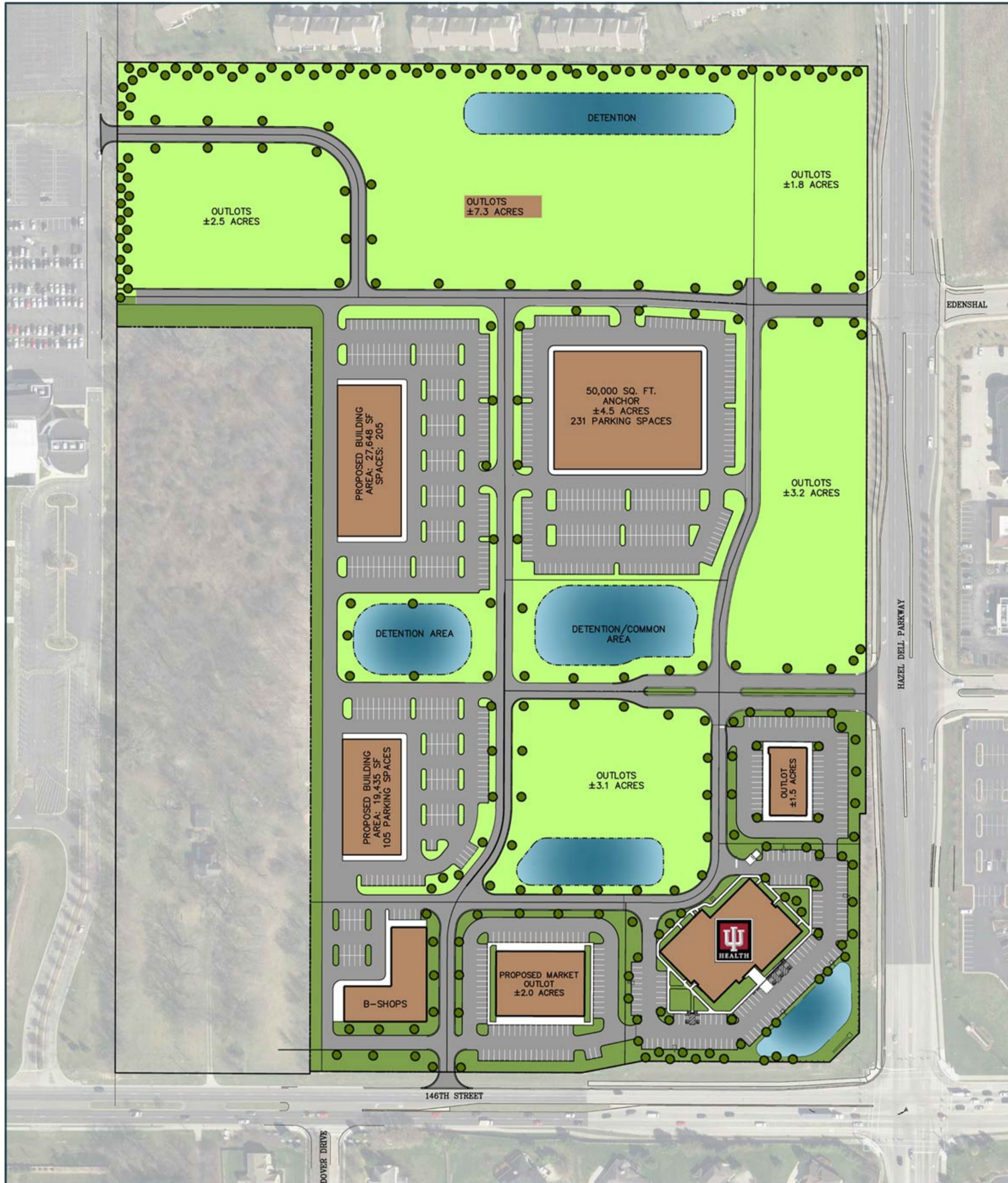
Bryan Chandler
 317.614.9400
 bchandler@eclipse.com

ECLIPSE
 REAL ESTATE
 6402 Cornell Avenue
 Indianapolis, IN 46220
 www.eclipse.com

DEVELOPMENT SITES - AVAILABLE

MIXED-USE, COMMERCIAL/MEDICAL OFFICE

NWC OF E. 146TH ST. & HAZEL DELL PKWY., NOBLESVILLE, IN



FOR MORE INFORMATION CONTACT:

Bryan Chandler
317.614.9400
bchandler@eclipse.com

ECLIPSE
REAL ESTATE
6402 Cornell Avenue
Indianapolis, IN 46220
www.eclipse.com